

Installation and use on Windows

Table of contents

1 Get Divvun.....	2
2 Installation and use of the Divvun proofing tools on Windows.....	2
3 Setting options in Windows to be able to write in Sami.....	4
4 Use Divvun on Windows.....	7
5 Uninstallation.....	9

1 Get Divvun

Download http://www.divvun.no/static_files/DivvunInstaller.exe or order a CD from the Sámi parliament, tel: +47 78 48 42 22.

2 Installation and use of the Divvun proofing tools on Windows

Warning:

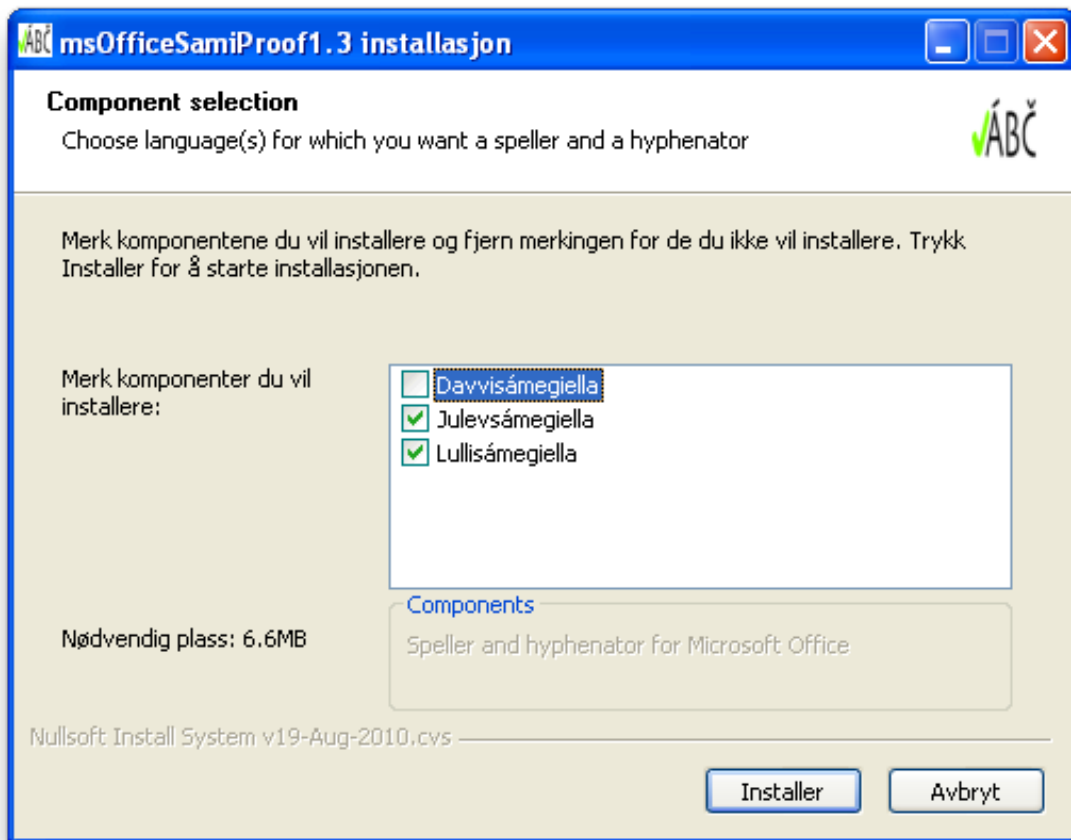
If you are upgrading from version 1, please uninstall the old version before installing version 2.

Insert the CD or click the download link - the installation application will start automatically.

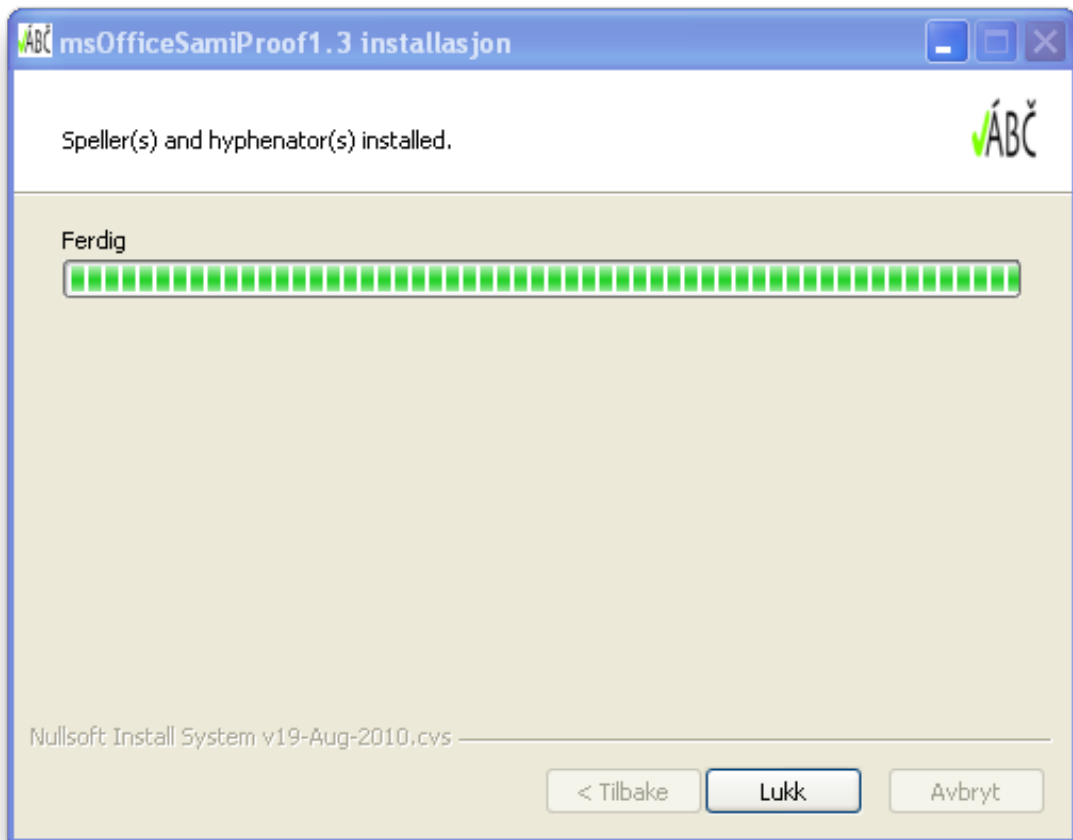
1. Select installation language, that is, the interface language to be used during installation:



2. To install the program, press the **Install** button.



3. To finish the installation, press the **Finish** button:



Then the installation is finished.

3 Setting options in Windows to be able to write in Sami

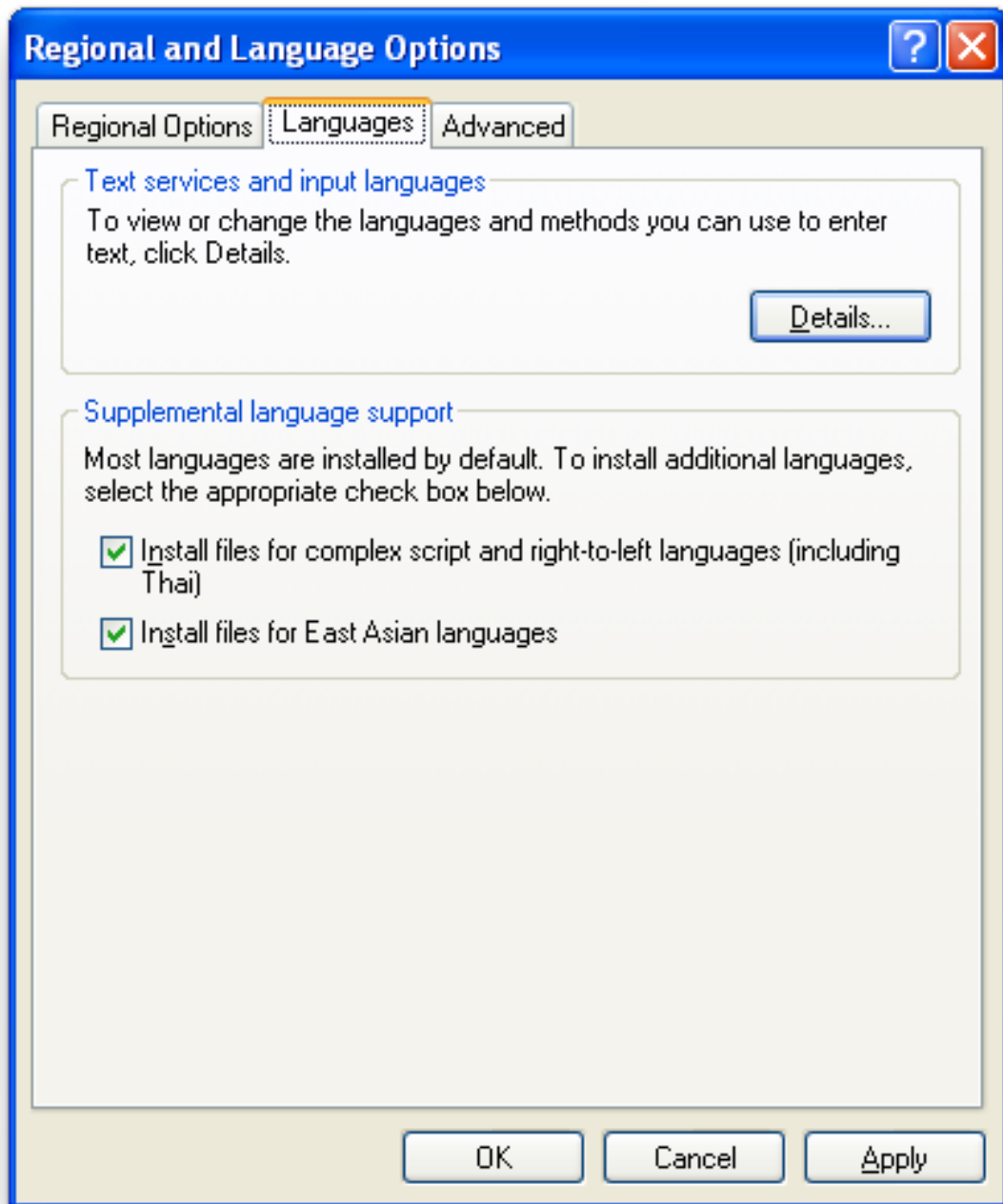
1. To be able to type Sami letters you will have to open the **Control Panel** . Double click the icon **Date, time, language and regional settings**:



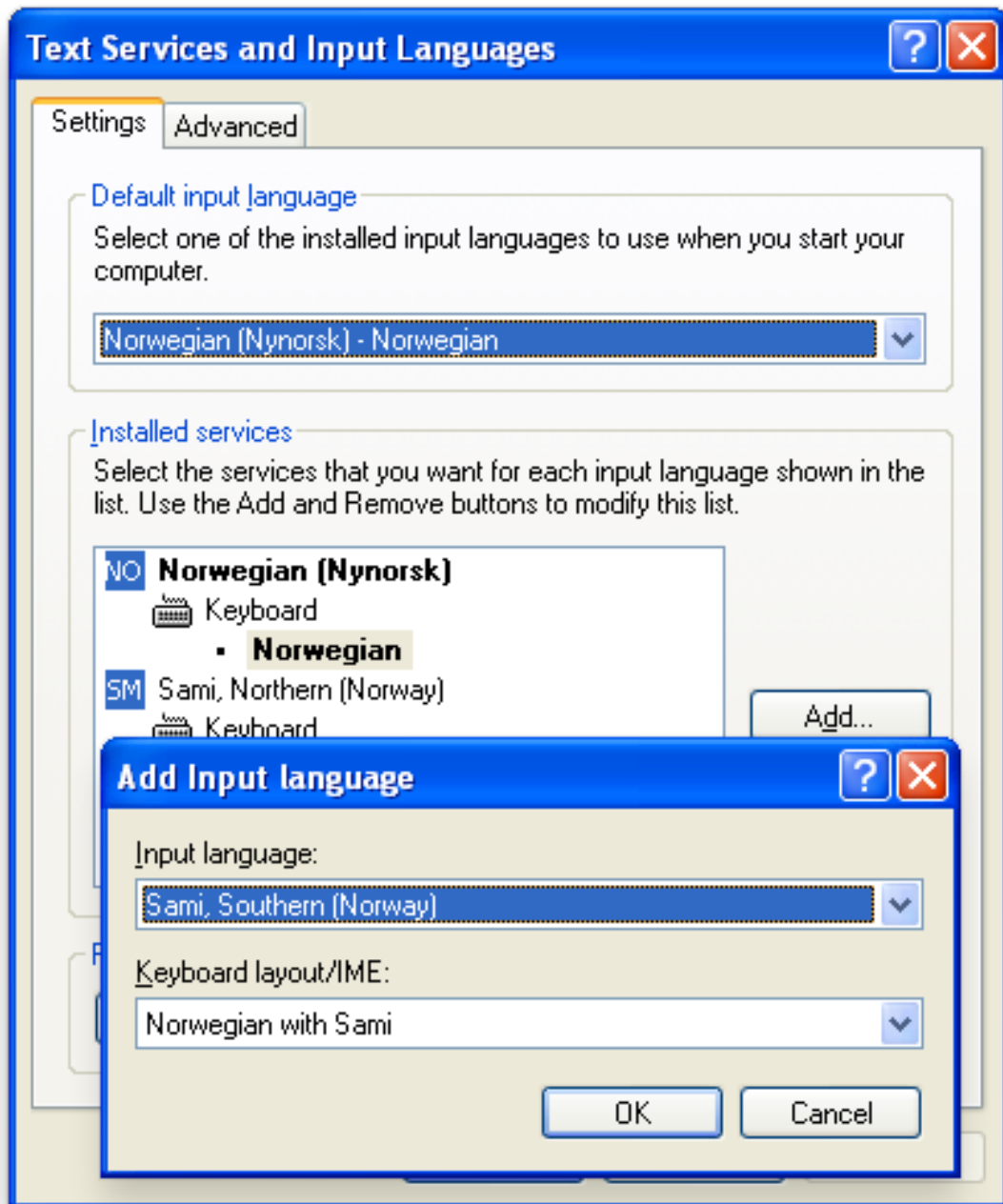
2. Now regional settings is open. Double click the icon **Settings for region and language** :



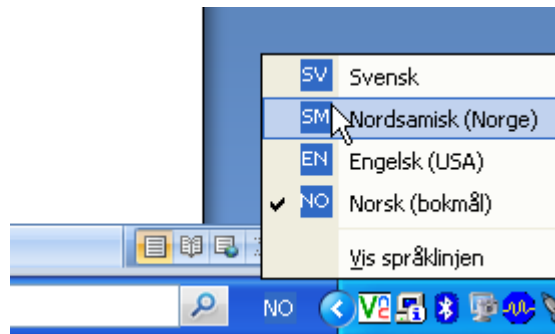
3. In this dialogue you choose the **Language** tab and then press the **Details** button:



4. Press the **Add...** button. Now you can choose which language you would like to use. Choose **Sami**:



5. Close all windows and return to the Desktop.
6. When you want to write in Sami from now on, you click the language icon in the lower right corner on the desktop, and choose **Sami** :

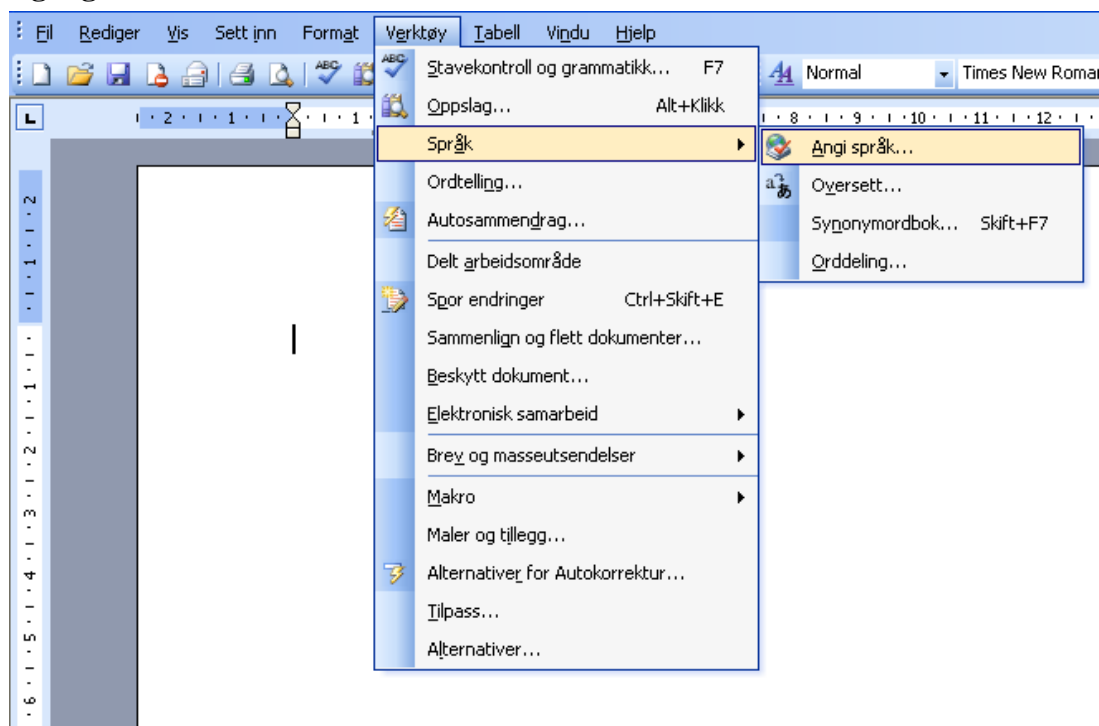


Now the keyboard setting is tuned to Sami letters, e.g. the key "q" will give the letter "á" and the key "]" on a US keyboard (= the key "" on a Norwegian keyboard) will give the letter "#" etc.

4 Use Divvun on Windows

In order for the Divvun tools to be able to help you, you have to tell the computer that you actually do intend to write in Sami, by choosing Sami as the language of your text.

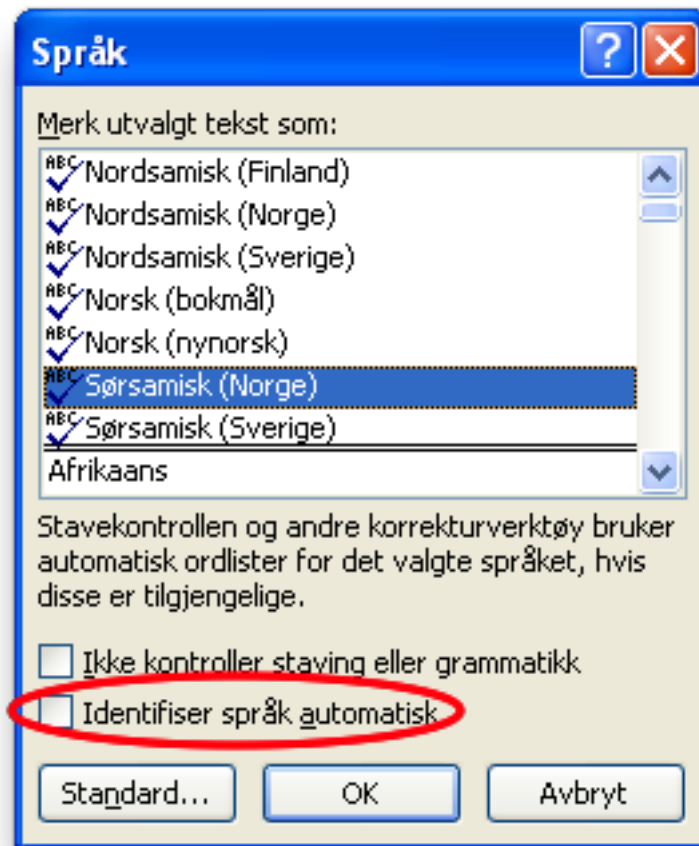
1a. MS Office 2003: When you have opened MS Office you choose the menu **Tools Languages Mark selected text as ...**



1b. Office 2007: When you have opened MS Office you click the tab **Se gjennom** , where you chose **Angi språk**

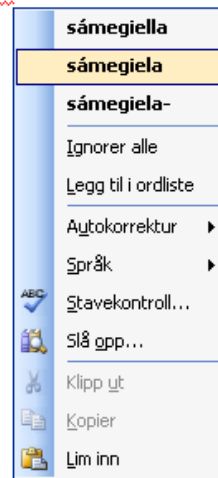
2. In the emerging dialogue you choose **Sami** or **Lule Sami** . NB! Make sure that the box **Identify language automatically** is *not* ticked. If it *is* ticked, Office will guess the text is

in languages other than Sami for a long time, and Divvun will not work as expected (most users report that it will eventually settle with the user's language setting, but that it takes time).



3. Now you may start to write in Sami, and the program will then help you with your spelling. You may either right-click (ctrl-click) on words underlined with red, in which case it looks as follows:

Dál de čállan sámegiella

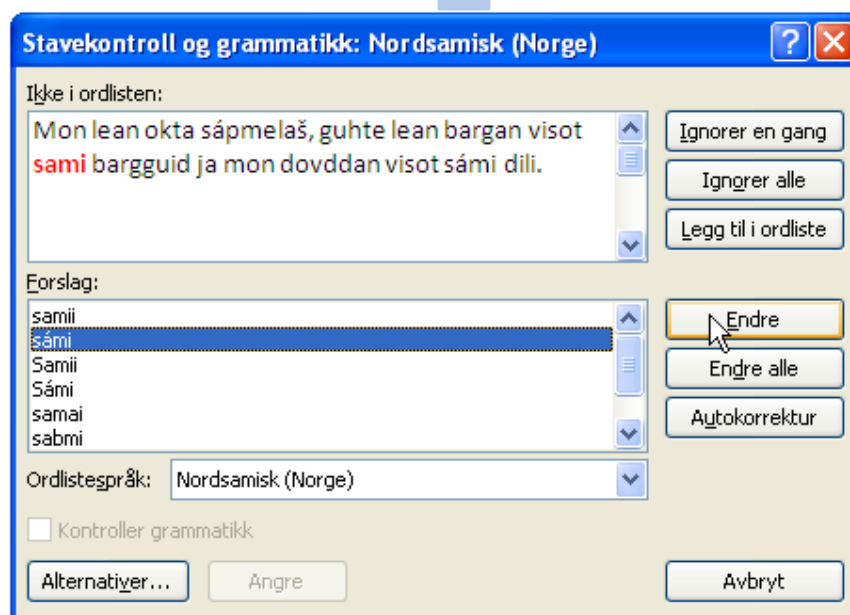


or you may start the speller in a separate window. Press the



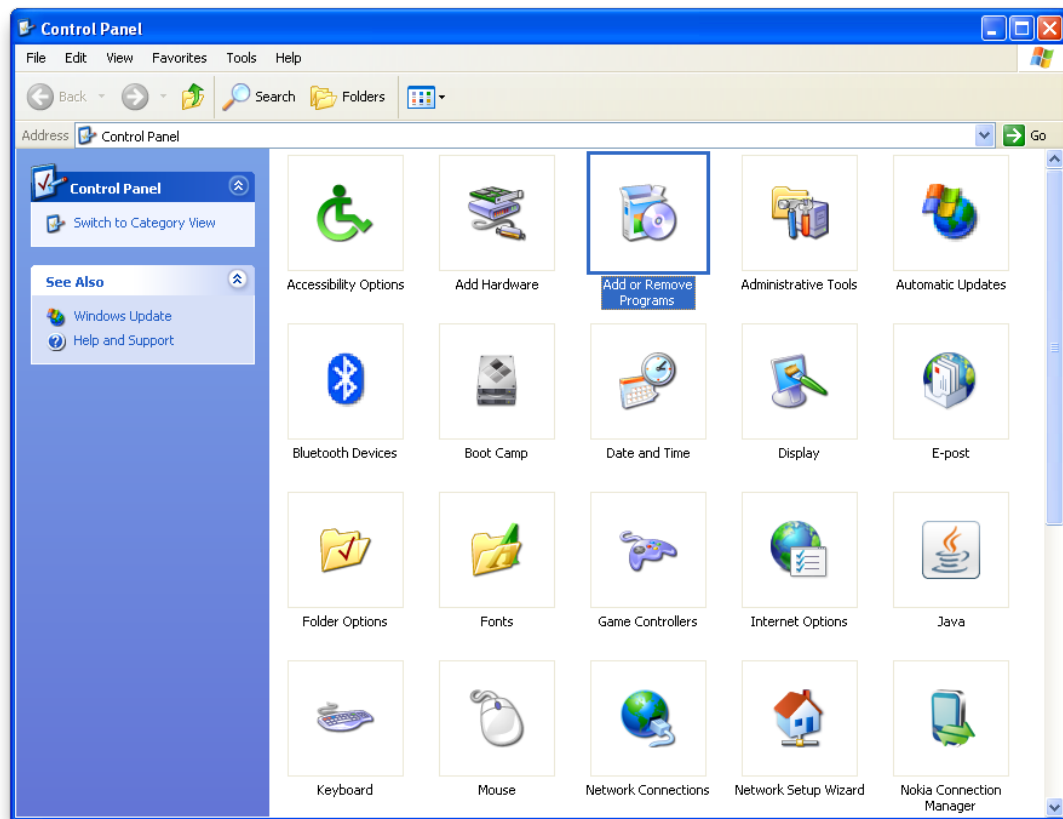
. The result is:

Mon lean okta sápmelaš, guhte lean bargan visot sami bargguid ja mon dovddan visot sámi dili.

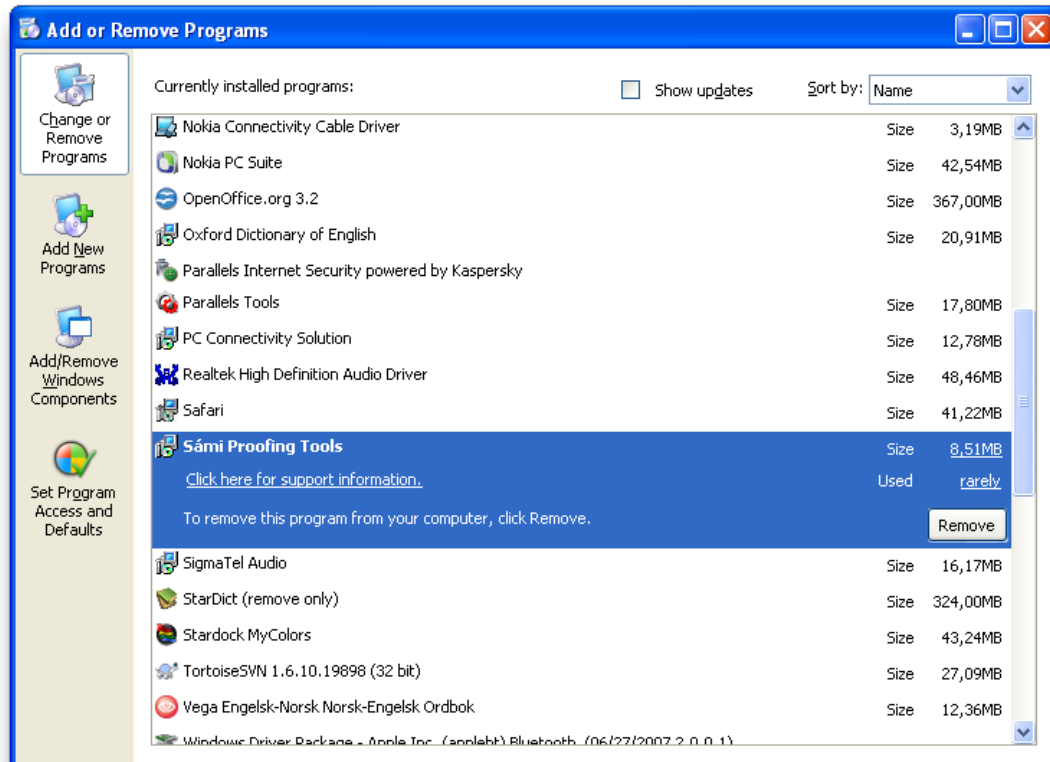


5 Uninstallation

- Open the **Control Panel**



- Press **Add or remove programs**
- Browse down to **Sámi Proofing Tools** and click the item



- Click the **Remove** button.
- When the removal process is finished, the **Sámi Proofing Tools** item in the list of installed programs will have disappeared
- If you have the South Sámi beta installed and want to remove it, select **SouthSamiSpellerBeta1** and click **Change/Remove**:

